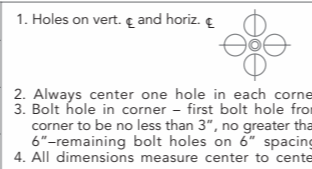


The Kice Dust Duct methodology was developed in the 1950's and has been refined over the years based on extensive experience. Great care and attention has been given to details such as branch entry angles, taper lengths and methods of construction. All of these small details add up to efficient and effective dust control systems.

Standard Dimensions – Collars and Flanges						
Table 1, Collar Length	Dim "K"	Table 2, Circular Flange Dimensions			Table 3, Rectangular Flange Dim. and Hole Location Rules	
		Flange I.D.	Wide x Thick	Hole Spacing	Flange Length	Wide x Thick
Diameter 12" or less	4"	12 1/2" or less	1 1/2" x 1/8"	8 holes @ 45°	12 1/2" or less	1" x 1/8"
13" - 36" inclusive	5"	13" - 24 1/2"	1 1/2" x 3/16"	12 holes @ 30°	13" - 24 1/2"	1 1/2" x 3/16"
37" - 48" inclusive	6"	25" - 36" incl.	1 1/2" x 3/16"	24 holes @ 15°	25" - 36" incl.	1 1/2" x 1/4"



Note 1: Collars for Dust Duct per Table 1 are to be connected by draw-type couplings - Kice type "CC" shown on page 2, this catalog.
 Note 2: Bolt holes to be 3/8" dia. through flanges for 5/16" NC hex-head bolts. Bolts not furnished with Dust Duct components

Mild steel components for line sizes smaller than 18" are built out of 16 gauge. Line sizes 18" and larger are built out of 14 gauge. Mild steel is painted Kice white. Aluminum and stainless steel construction is available upon request.

Weld seams are centered on top or bottom of components. Components with flanges have one bolt hole centered on the weld seam.

Part numbers start with a 2-Letter code for the specific item followed by numbers with dashes in between. Numbers go in sequence from A to B to C...and correspond to the diagrams in this catalog. Please refer to the catalog to properly define each part number. See Figure 1 for example.



5500 N. Mill Heights Drive
 Wichita, KS 67219 USA
 Phone: 316-744-7151
 Fax: 316-744-7355
 e-mail: sales@kice.com
www.kice.com
 QuikShip Center
 Toll Free: 1-877-289-5423
 e-mail: quikship@kice.com

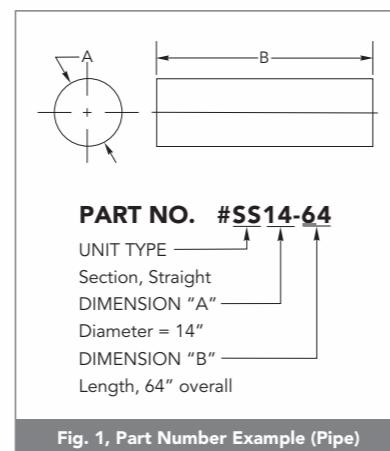
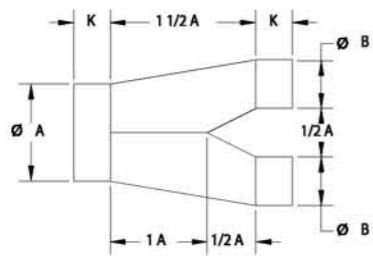
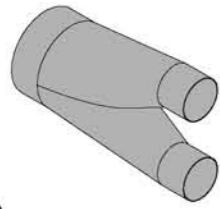


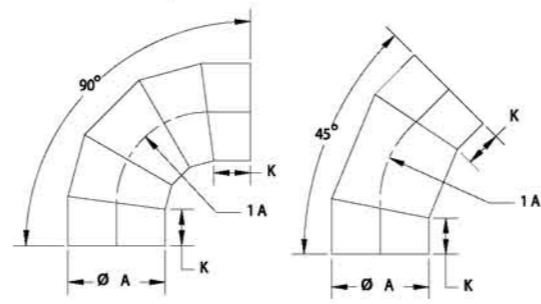
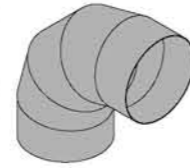
Fig. 1, Part Number Example (Pipe)

Dust Duct Manual
 KICE DATA SHEET | DD-6

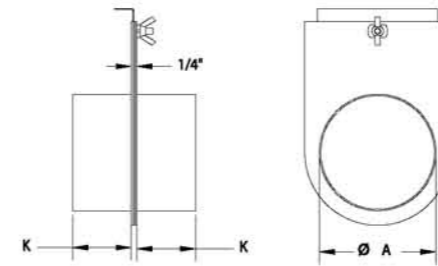
YP



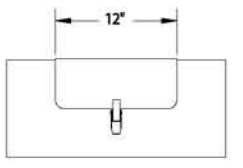
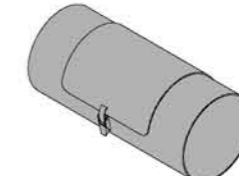
ER



GS

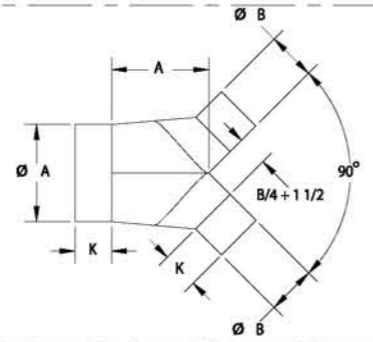
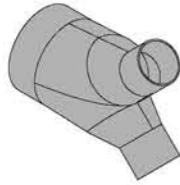


CD Door Only

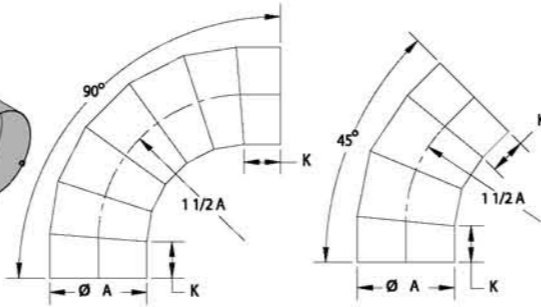
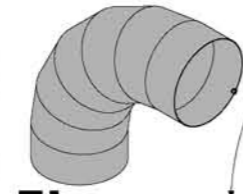


CUT HOLE IN DUCT AS REQ. ON JOB

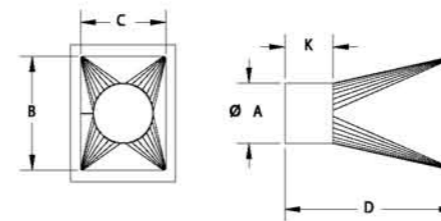
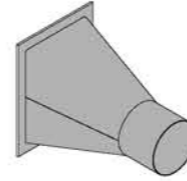
YA



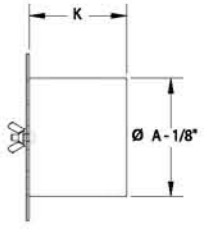
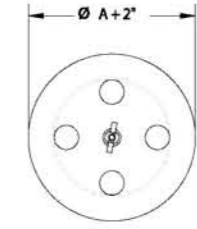
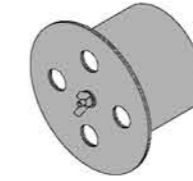
EL



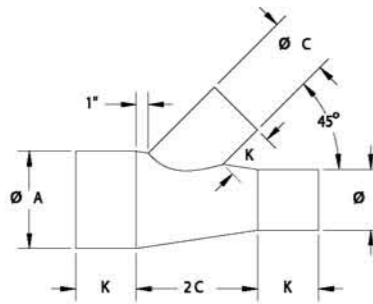
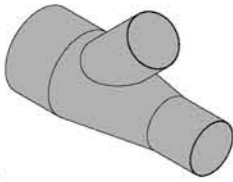
TN



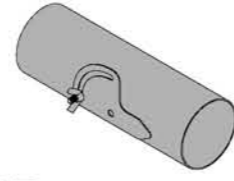
CI



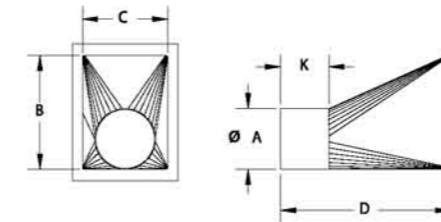
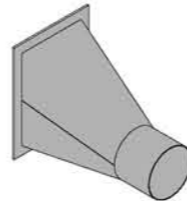
BS



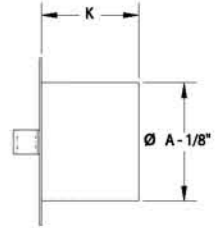
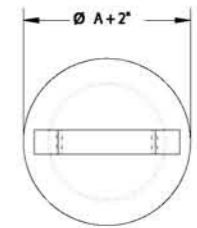
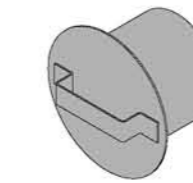
SD



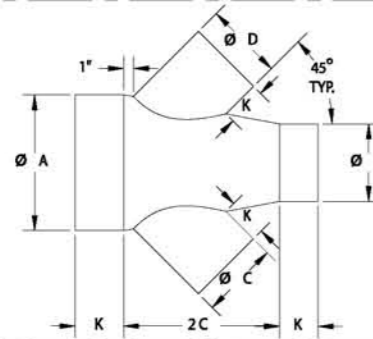
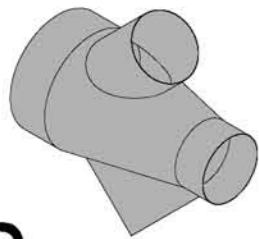
TS



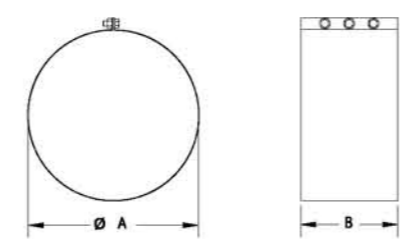
CP



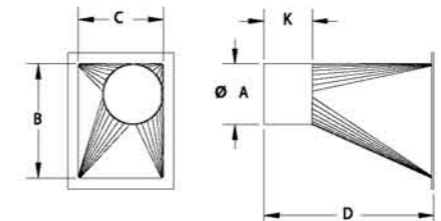
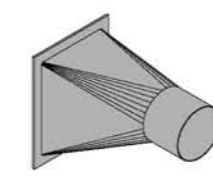
BD



CC

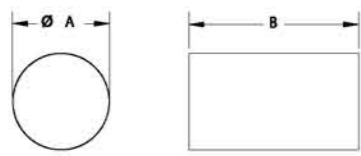
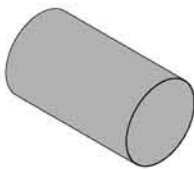


TC

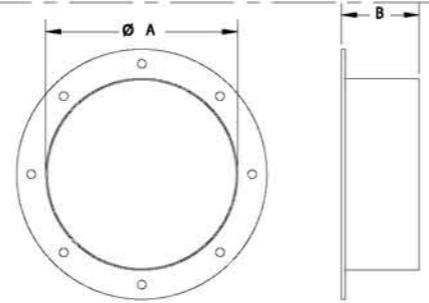
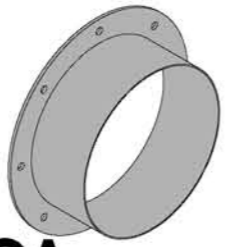


Notes:

SS

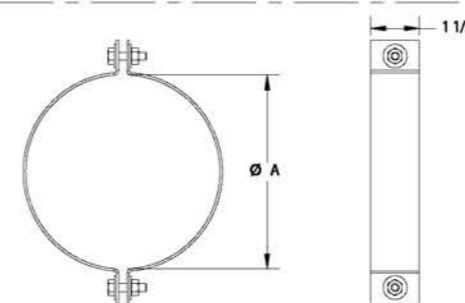


CA



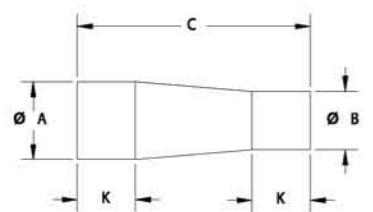
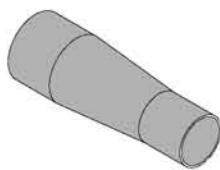
ALL SIZES AVAILABLE

CR

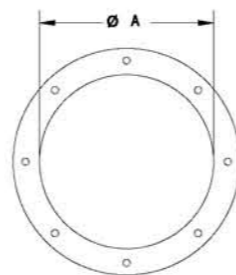


ALL SIZES AVAILABLE

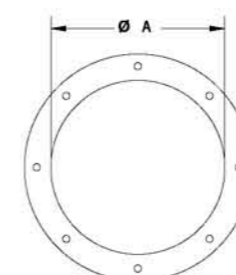
ST



CF



CG Gasket



Sizing/Specification Data on Back

REV	CHANGE	DATE	BY
KICE INDUSTRIES, INC.			
<small>5500 MILL HEIGHTS DR. WICHITA, KANSAS 67219 PH: (316) 744-7151 FAX: (316) 744-7355</small>			
SIZE	DESCRIPTION	REV	
D	DUST DUCT CATALOG	-	
DRW	CHKD	APPROVED	DATE
JBR	EA	EA	12-15-06
			SCALE
			1/8" = 1' 0"
			DRWG. NO.
			XXX-XXX-XXXX
			FAB. DEPT.